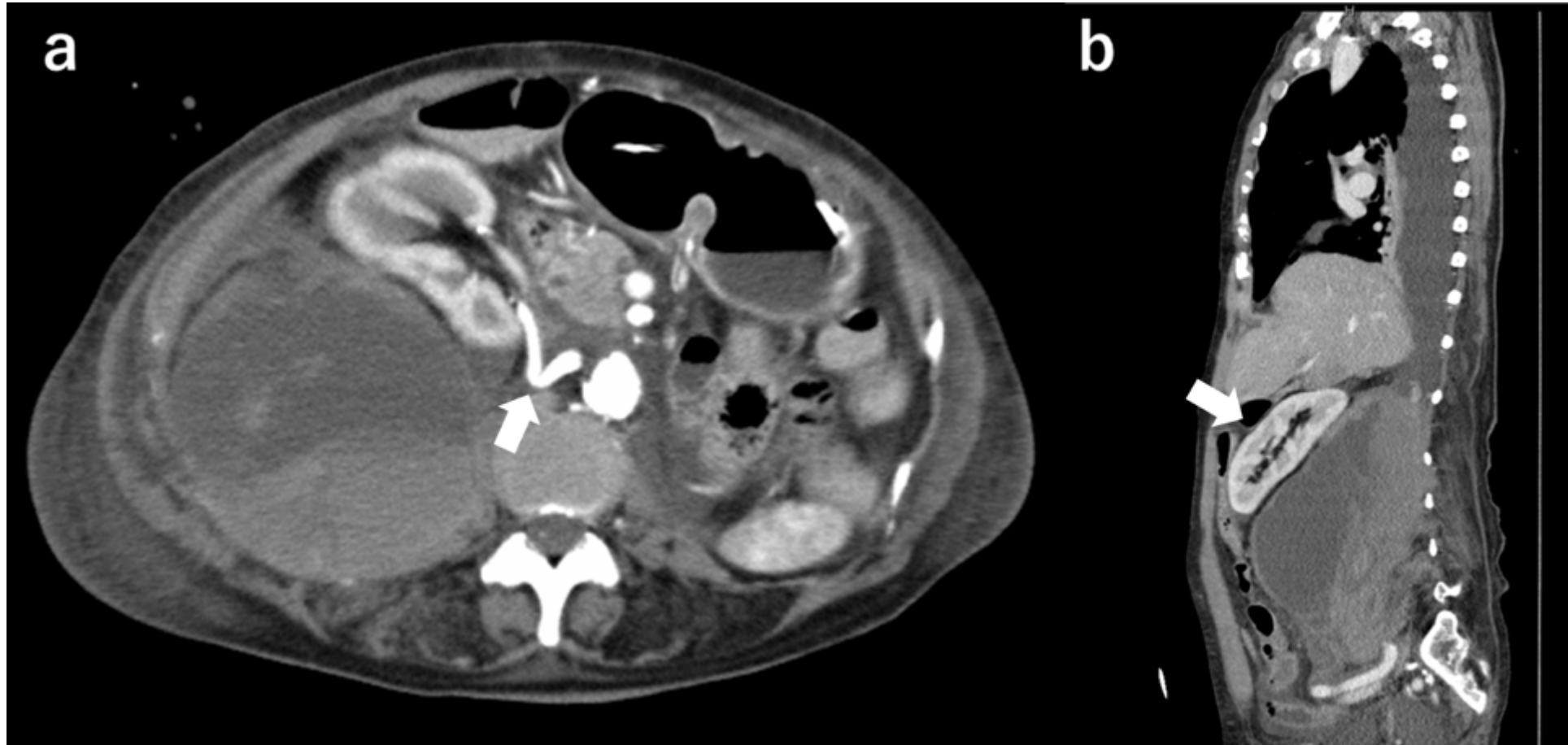
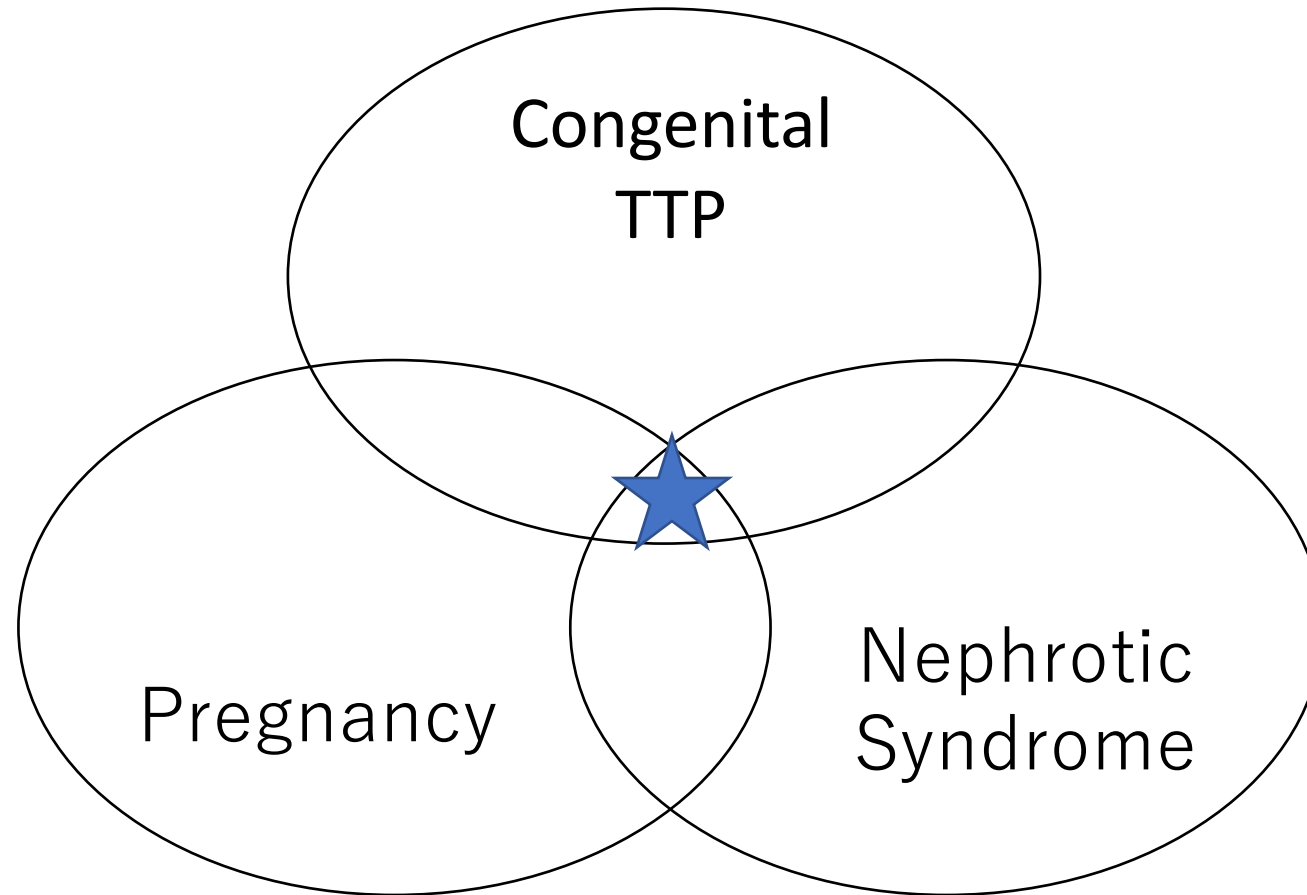


Renovascular hypertension secondary to massive iliopsoas hematoma



Here we report renal artery stenosis due to a ventrally bent artery by massive iliopsoas hematoma, leading to renovascular hypertension, and subsequent oliguric AKI by use of ARB.

Pregnancy-onset thrombotic thrombocytopenic purpura with nephrotic syndrome : a case report



Here we report a case of pregnancy-onset TTP with nephrotic syndrome.
Pregnancy-onset TTP can have renal involvement as its first sign.
Early termination of pregnancy should be performed to preserve renal function.

Tonicity Matters, Especially in Complex Hyponatremia Resulting from Pseudo-, Trans-locational, and True Hypotonic Hyponatremia: An Educational Case Report

Masatomo Ogata, Satoru Morikubo, Naohiko Imai, Yugo Shibagaki and Masahiko Yazawa

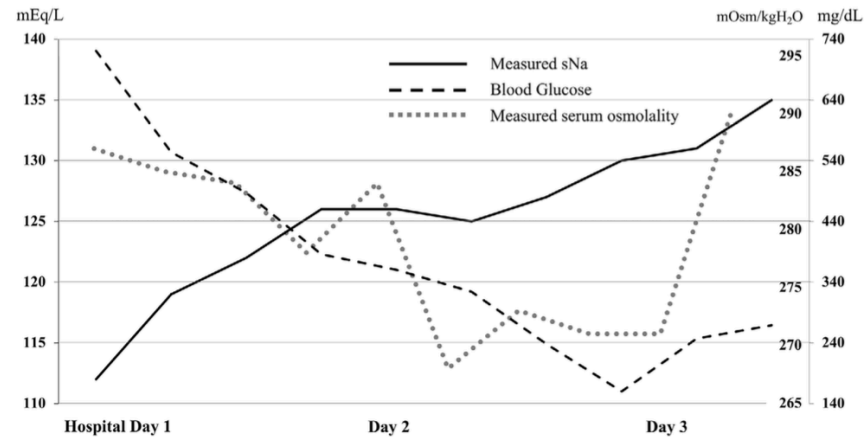


Figure 2. The clinical course of the measured serum Na (sNa), measured serum osmolality, and blood glucose values.

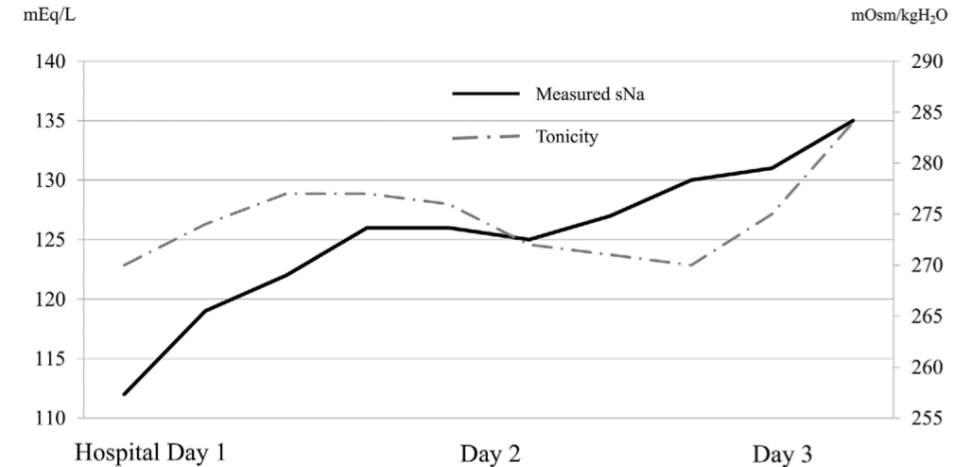


Figure 3. The clinical course of the measured serum Na (sNa) and tonicity values.

40s Male
Hospitalized for acute
pancreatitis with severe
hyponatremia.
sNa 112mEq/L

After intravenous infusion
therapy, sodium rapidly
corrected.
However, the tonicity did
not change.

It is important to pay
attention to tonicity in
sodium correction to
prevent ODS and brain
edema.